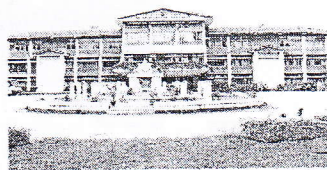


Pokharel

6/13/201

Tribhuvan University's Role in Nepal's Higher Education



Prof. Ridish K. Pokharel, PhD
Planning Chief, Tribhuvan University
June 13, 2016

Introduction

- Higher education in Nepal
 - Provided by universities, colleges and other institutions that award degree
- Critical pillar of human development/human capital
 - Essential for national economic and social development
 - Need to focus on higher education
- In Nepal, higher education started in
 - 1929 (1985 BS) – 87 years before started at Trichandra College



Pokharel

Cont...

- National Education Commission
 - Introduced the concept of multi-university in 1988 (2045 BS)
 - Since then new university came in the existence
- Higher education in Nepal is offered by
 - Nine full functioning universities
 - Four health institutes



Pokharel

Name of full functioning universities

SN	Name of University	Year of establishment
1	Tribhuvan University	1959
2	Nepal Sanskrit University	1986
3	Kathmandu University	1991
4	Purbanchal University	1994
5	Pokhara University	1997
6	Lumbini Baudha University	2006
7	Mid-Western University	2010
8	Far-Western University	2010
9	Agriculture and Forestry University	2010



Pokharel

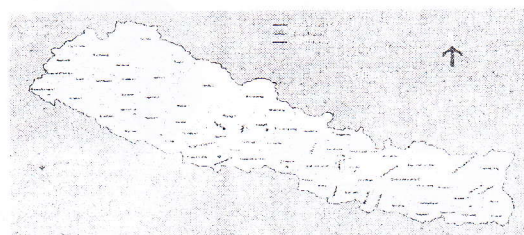
Name of Health Institutes

SN	Name of Health Institutes	Year of establishment
1	B.P. Koirala Institute of Health Sciences, Dharan	1993
2	National Academy of Medical Sciences, Kathmandu	2002
3	Patan Academy of Health Sciences, Patan	2010
4	Karnali Academy of Health Sciences, Jumla	2011



Pokharel

Cont...



Three more universities are in the pipe line

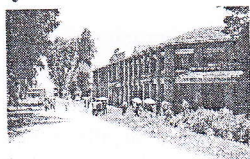


Pokharel

Tribhuvan University

TU is a pioneer institution in higher education in Nepal

- Established in 1959 as an autonomous institution



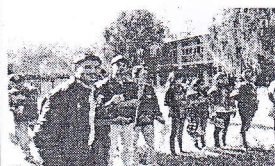
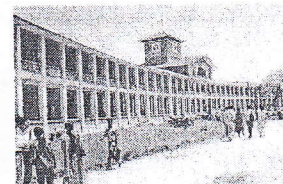
Pokharel

- One of the largest universities in the world (students population)
- One of the largest organizations in the country (for generating employment)

Academic Programs

Under graduate (Bachelor) programs

- 180 programs (1,079 courses)



Pokharel

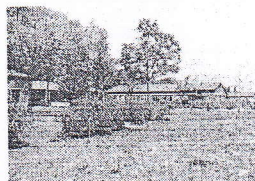
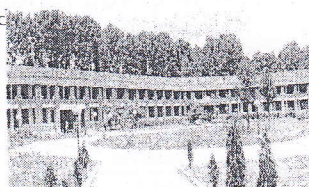
Graduate (Master, M. Phil and Ph. D.) programs

- 100 programs (1,000 courses)

Under Tribhuvan University

Five institutes, four faculties, and four research centers

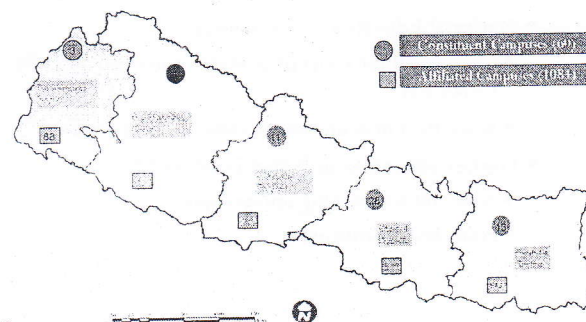
- 60 constituents campuses
- 39 central departments



Pokharel

- One school of management
- 1,084 affiliated colleges
- 3 per cent technical colleges

Constituent & Affiliated Campuses by DR

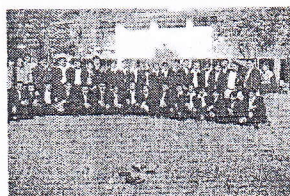
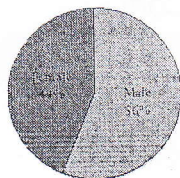


Pokharel

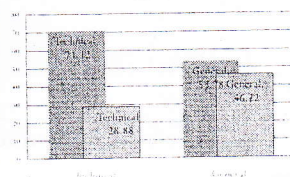
Students enrolment by gender

Total number of students enrolled in 2071/072 (2014/015)

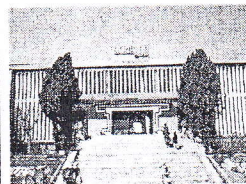
- 436,781 (86% of enrolled students in HE)
- 15% in technical education



Pokharel

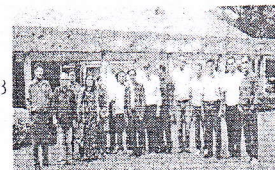


Employee of Tribhuvan University



- Total employees of TU – 15,196
- Teaching staffs – 7,966
- Male – 82% ; Female – 18%
- Permanent – 6,266, Contract – 1,700
- Big gap in retirement & recruitment
- Average retirement – 3 persons/day

- Non-teaching staffs – 7,230
- Male – 68%; Female – 32%
- Officer – 1,137; non-officer – 6,093
- Permanent – 4,831
- Positioned not defined – 2,800



Pokharel

Existing situation at Tribhuvan University

- Research
 - Not mandatory; considered it as optional
- Curriculum focused on theoretical aspects
 - Graduates find difficult to put their knowledge into practices
- Library – less integrated with classroom activities
- Insufficient lab facilities to meet the growing demands
- Limited use of modern technologies in learning process



Pokharel

Cont...

- Property disputes
- Poor governance
 - Political influence in appointing authorities, officials and key staffs
 - No scientific basis for evaluation
 - Promotion
 - Publication
 - Work performance



Pokharel



Cont...

- Status of TU in academic ranking
 - TU not listed in globally academic ranking (such as Times Higher Education and Center for World Class University at Sanghai Jiao Tong University)
 - 6,729th and 2,535th placed globally and regionally (Academy Rank)
 - Get blamed as factory of producing unemployed youth

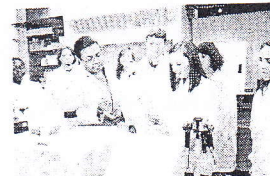


Pokharel

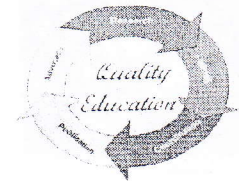
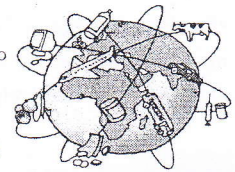
Needs Reform

Globalization

- Opens the opportunity for those who wish to get quality education
- Quality education requires
 - Integration of research into teaching



Pokharel



Cont...

- Globalization
 - Central issues in higher education
 - Opens opportunities and challenges as well
- Opportunity
 - Those who are keen to get quality education
 - Open the job opportunity
 - Jobs can be shipped; wherever there is internet connection
 - One sitting in Nepal can compete to US jobs



Pokharel

Cont...

- Job qualification
 - Not what you do but what you know
- Shifting from industrial based economies to knowledge based industries
 - Changed in labor market with more knowledge and skills workers
- Future belong to nation
 - Quality education for its citizens
- Education of 21st century
 - Market oriented

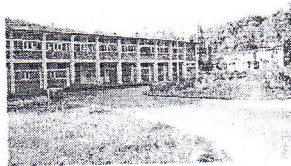


Pokharel

Tribhuvan University's Efforts

Academic Excellence

- Standardized programs by changing from 2 years to 3 and 4 yrs depending on the nature of programs
- Expanded M. Phil and PhD programs in different disciplines



Diversified programs

- Introduced new programs such as international relations with diplomacy, conflicts, peace & development, and BBA

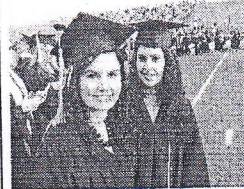


Pokharel

Cont...

- Introduced credit transfer policy & also set M. Phil & PhD as basic degree to hire faculty

- Approved by TU senate in Sept. 20, 2015



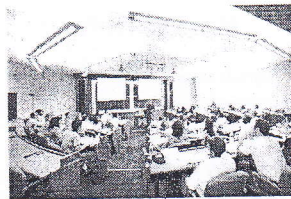
Pokharel

- Implemented semester system in a phase wise
- Developed affiliation policy



Cont...

- Developed a policy for managing and operating examination effectively



- Worked jointly between Tribhuvan University and other academic institutions

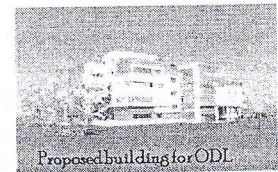


Pokharel

Way Forward

Offer open distance learning (ODL) classes

- Opportunities for those who live in remote areas and did not get admission



Pokharel

- Adopt policy for merging classes
- Encourage to offer academic programs in collaboration with international universities
- Allocate seats for international students

Research programs

Academic research

- Awarding degrees (MS & PhD)
- Non-degree research
- Conducted by faculty & institution



Move from teaching to research focus

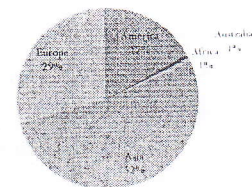
- Create competitive research funds



Pokharel

Cont...

- Introduce publications
- Criteria for faculty promotion



Pokharel

Strengthening international collaboration

- Signed MOU with 150 universities from 31 countries

Cont...

Make efforts to conduct government research through TU
Develop TU as **Think Tank** institution

- Provide feed back on policy issues



Pokharel

Publish peer reviewed journal regularly

Restructure research center

- TU research and development center with different disciplines



Infrastructure and Facility

Enough spaces for developing infrastructures in TU, Kirtipur

- 3,758 ropanies (188.23 ha)

Good networking



Pokharel

Initiated to develop TU premises as free Wi-Fi Zone

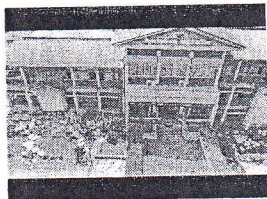
- Estimated costs NRs1.6 million



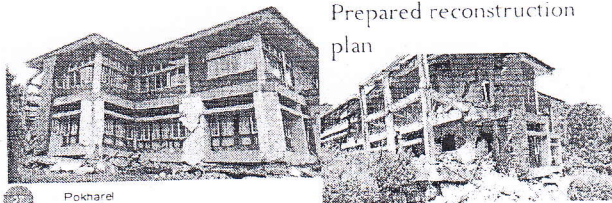
Cont...

Assessed property damages caused by devastating earthquake and subsequent after shocks

- NRs9.43 billions



Prepared reconstruction plan



Pokharel

Cont...

Promote e-governance and e-library

Connect department/campuses through networking

Create TU ID for employees,

students and institution under TU

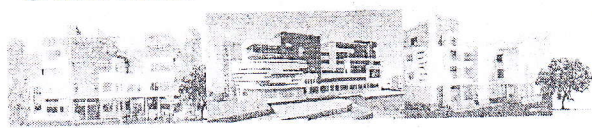


Pokharel

Estimated costs for developing free Wi-Fi zone, e-library, e-learning and e-administration

- NRs25 million

- Create Reconstruction Authority unit in TU
- Prepared Master Plan for TU premises, Kirtipur
- Created Reconstruction & Renovation funds

Proposed building of VC office
Pokharel

Conclusions

• We tend to be proud of TU for

- Its shape and size

• But being old and large would not make no sense if timely changes are not made

• TU needs transformation for

- Optimum utilization of its infrastructures and workforce

• Diversification of its programs based on market needs

• Innovation and new knowledge for complementarily with development challenges



Pokharel